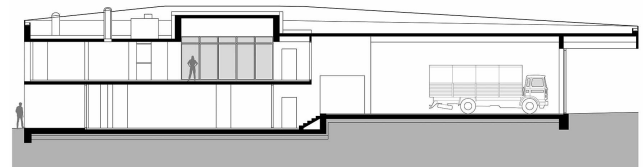




Planned as a compact and monochromatic volume with specific incisions, the building conveys the idea of volume and incision reminiscent of a cut loaf of bread or a sliced kiwi. Not only does the monochrome dark brown/olive coloured skin of the building create the perfect backdrop for the brightly coloured incisions that mark specific areas such as the front and back entrance, the roof terrace and the entrance/exit to the garage—the dark skin also stands in contrast to the bright interior spaces and bright red fire engines parked in the garage. The fire engines are in full view through the fully glazed facade of the vehicle garage, as if they were parked inside an oversized display case. A fire brigade on standby mode is the theme here. Through this transparency the building conveys a sense of being in a constant state of readiness, as if it could jump into action at any moment to fulfill its prime function at anytime, thus conveying a sense of security and alertness.



Friday  
Freitag  
Vendredi

23|05